



Impacts of the Manaus pollution plume on the microphysical properties of Amazonian warm-phase clouds in the wet season

Micael A. Cecchini¹, Luiz A. T. Machado¹, Jennifer M. Comstock², Fan Mei², Jian Wang³, Jiwen Fan², Jason M. Tomlinson², Beat Schmid², Rachel Albrecht⁵, Scot T. Martin⁴, and Paulo Artaxo⁶

¹Center for Weather Forecasting and Climate Research (CPTEC), National Institute for Space Research (INPE), São José dos Campos, Brazil

²Atmospheric Science and Global Change Division, Pacific Northwest National Laboratory, Richland, WA, USA

³Atmospheric Sciences Division, Brookhaven National Laboratory, Upton, NY, USA

⁴School of Engineering and Applied Sciences, Department of Earth and Planetary Sciences, Harvard University, Cambridge, Massachusetts, USA

⁵Instituto de Astronomia, Geofísica e Ciências Atmosféricas (IAG), Universidade de São Paulo (USP), São Paulo, Brazil

⁶Instituto de Física (IF), Universidade de São Paulo (USP), São Paulo, Brazil

Correspondence to: Micael A. Cecchini (micael.cecchini@cptec.inpe.br)

Received: 22 December 2015 – Published in Atmos. Chem. Phys. Discuss.: 19 January 2016

Revised: 27 April 2016 – Accepted: 20 May 2016 – Published: 9 June 2016

Abstract. The remote atmosphere over the Amazon can be similar to oceanic regions in terms of aerosol conditions and cloud type formations. This is especially true during the wet season. The main aerosol-related disturbances over the Amazon have both natural sources, such as dust transport from Africa, and anthropogenic sources, such as biomass burning or urban pollution. The present work considers the impacts of the latter on the microphysical properties of warm-phase clouds by analysing observations of the interactions between the Manaus pollution plume and its surroundings, as part of the GoAmazon2014/5 Experiment. The analysed period corresponds to the wet season (specifically from February to March 2014 and corresponding to the first Intensive Operating Period (IOP1) of GoAmazon2014/5). The droplet size distributions reported are in the range $1\ \mu\text{m} \leq D \leq 50\ \mu\text{m}$ in order to capture the processes leading up to the precipitation formation. The wet season largely presents a clean background atmosphere characterized by frequent rain showers. As such, the contrast between background clouds and those affected by the Manaus pollution can be observed and detailed. The focus is on the characteristics of the initial microphysical properties in cumulus clouds predominantly at their early stages. The pollution-affected clouds are found to have smaller effective diameters and higher droplet number concentrations. The differences range from 10 to 40 % for the

effective diameter and are as high as 1000 % for droplet concentration for the same vertical levels. The growth rates of droplets with altitude are slower for pollution-affected clouds (2.90 compared to $5.59\ \mu\text{m km}^{-1}$), as explained by the absence of bigger droplets at the onset of cloud development. Clouds under background conditions have higher concentrations of larger droplets ($> 20\ \mu\text{m}$) near the cloud base, which would contribute significantly to the growth rates through the collision–coalescence process. The overall shape of the droplet size distribution (DSD) does not appear to be predominantly determined by updraught strength, especially beyond the $20\ \mu\text{m}$ range. The aerosol conditions play a major role in that case. However, the updraughts modulate the DSD concentrations and are responsible for the vertical transport of water in the cloud. The larger droplets found in background clouds are associated with weak water vapour competition and a bimodal distribution of droplet sizes in the lower levels of the cloud, which enables an earlier initiation of the collision–coalescence process. This study shows that the pollution produced by Manaus significantly affects warm-phase microphysical properties of the surrounding clouds by changing the initial DSD formation. The corresponding effects on ice-phase processes and precipitation formation will be the focus of future endeavours.

1 Introduction

The natural atmosphere of the Amazon is a system where the forest itself provides the nuclei for clouds, which in turn activate the hydrological cycle and help distribute the water that maintains the local flora. Under undisturbed conditions the aerosol particles that serve as cloud condensation nuclei (CCN) are mainly secondarily generated from the oxidation of biogenic gases (Pöschl et al., 2010). Primary aerosols emitted directly from the forest may also contribute to the overall CCN population and are especially active as ice nuclei (IN). A review of the cloud-active aerosol properties and sources in general is provided by Andreae and Rosenfeld (2008) and specifically for the Amazon by Martin et al. (2010). The results presented herein relate to the local wet season, which presents a relatively clean atmosphere compared to the local dry season, when biomass burning is more frequent (Artaxo et al., 2002).

Given such an environment it is interesting to study the impacts that a city like Manaus has on the atmospheric conditions. Manaus is located in the Brazilian state of Amazonas, in the middle of the forest, and has a population of about 2 million people. The human activities associated with the city produce air pollution, which interacts with the natural background gases and particles. Several studies found that city pollution enhanced atmospheric oxidation (Logan et al., 1981; Thompson, 1992; Kanakidou et al., 2000; Lelieveld et al., 2008), which not only impacts human health but also may interact with biogenic gases to increase secondary aerosol formation. Another example is the interaction between volatile organic compounds (VOCs) with the urban NO_x , which leads to enhanced ozone concentrations through a photochemical process (Trainer et al., 1987; Chameides et al., 1992; Biesenthal et al., 1997; Starn et al., 1998; Roberts et al., 1998; Wiedinmyer et al., 2001).

The effects that the Manaus city has on the chemical properties of the local atmosphere potentially alter the way in which clouds are formed. Not only can the human activities change chemical properties of particles, they can also increase the number concentration available for droplet formation. Most of this additional particulate matter is tied to emissions from traffic and power plants in the case of Manaus. Previous studies regarding the effects of anthropogenic aerosols on Amazonian cloud generally focused on biomass-burning-related occasions (e.g. Roberts et al., 2003; Andreae et al., 2004; Freud et al., 2008; Martins and Silva Dias, 2009) in the dry or transition seasons. However, no study evaluated the urban aerosol interaction with clouds over the rainforest during the wet season, when biomass burning is strongly reduced due to the frequent rain showers that leave the forest wet and more difficult to burn. In this case, the effects of the Manaus plume can be studied separately and in detail. Polluted clouds over the Amazon usually present more numerous but smaller droplets that grow inefficiently by collision–

coalescence and therefore delay the onset of precipitation to higher altitudes within clouds (Rosenfeld et al., 2008).

The results presented herein are based on data sets collected between February and March 2014 during the first Intensive Operations Period (IOP1) of The Observations and Modeling of the Green Ocean Amazon (GoAmazon2014/5) experiment (Martin et al., 2016). The period is in the wet season, which presents a clean atmosphere due to the reduction in biomass burning. The pristine characteristic of the background air provides the opportunity for contrasting the microphysics of natural and urban pollution-affected clouds. Due to the proximity to the Intertropical Convergence Zone (ITCZ) and the trade winds, the large-scale motions are rather stable over the region for the campaign period. Most of the time, trade winds from the north-east prevail, advecting the pollution plume south-westward. This scenario allows for the first time the direct comparison between clouds formed under background conditions and those affected by pollution in the wet season.

Clouds in the wet season differ from those in the dry and transition periods both because of aerosol conditions and large-scale meteorology (Machado et al., 2004). Although there is not a complete reversal of the mean wind directions intra-annually, the wet season clouds can be related to a monsoon system, usually referred to as the South American Monsoon System (SAMS). Zhou and Lau (1998) suggest that the monsoon-like flow can be understood when analysing monthly anomalies on the wind fields. During the austral summer months, the winds tend to have a stronger north-eastern component over the Manaus area, while at austral wintertime the stronger wind component is from the south-east. More details on the SAMS, including comparisons with other monsoon systems, can be found in Vera et al. (2006).

The main objective of this work is to understand the effects that anthropogenic urban pollution have on cloud droplets properties and development in the Amazon during the wet season. Specifically, the focus is on the comparison between warm-phase properties of clouds affected and not affected by the pollution emitted from Manaus city. The urban aerosol effect will be analysed as function of height above the cloud base and vertical velocity. Section 2 describes the instrumental set-up and the methods used for the analysis. The main findings are detailed in Sect. 3, while the summary and discussion are presented in Sect. 4.

2 Methodology

Sixteen research flights took place near Manaus in the Amazon forest between February and March 2014. Manaus coordinates are $3^{\circ}06' \text{ S}$, $60^{\circ}01' \text{ W}$ and the dates and time periods of the flights are listed in Table 1 with times in UTC (local time is UTC – 4). The US Department of Energy Atmospheric Radiation Measurement program Gulfstream-1 (G-1) aeroplane (Schmid et al., 2014) performed 16 flights while

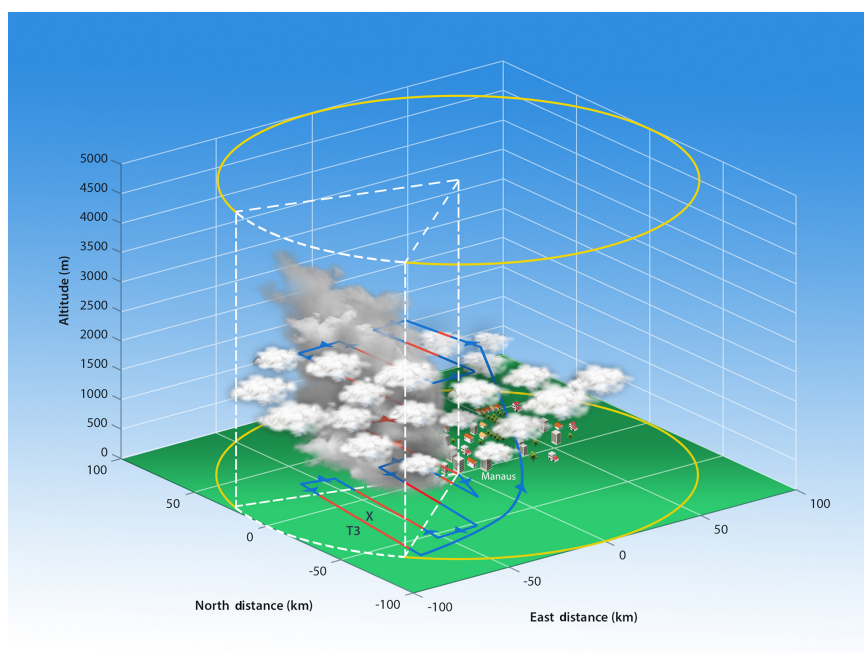


Figure 1. Conceptual schematic for the flight patterns planning. It shows Manaus city and its pollution plume dispersing over the surrounding Amazon forest. The Cu field shown is very common during the wet season and is representative for most of the cloud conditions during the flights. The yellow circles indicate a 100 km radius from Manaus airport, although the figure is not meant to be quantitatively accurate. The lines with arrow heads show the most common flight plan used, where blue regions are possible locations for the background air measurements and the red ones indicate measurements inside the plume section (dashed white lines). T3 is a GoAmazon site to the north of Manacapuru.

Table 1. Dates and times for all G-1 flights during GoAmazon2014/5 IOP1. Local time for Manaus is UTC – 4. All flights were carried out in the year 2014.

Flight number	Date	Start time (UTC)	End time (UTC)
1	22 Feb	14:38:27	17:25:26
2	25 Feb	16:32:06	18:40:07
3	1 Mar	13:35:37	15:27:35
4	1 Mar	17:18:48	18:47:07
5	3 Mar	17:46:34	19:11:57
6	7 Mar	13:09:51	15:35:25
7	10 Mar	14:26:37	17:09:35
8	11 Mar	14:42:23	17:51:08
9	12 Mar	17:21:25	19:29:42
10	13 Mar	14:16:09	17:21:27
11	14 Mar	14:18:54	16:48:23
12	16 Mar	14:40:17	17:26:32
13	17 Mar	16:24:40	19:26:36
14	19 Mar	14:26:38	17:17:48
15	21 Mar	16:33:47	18:56:07
16	23 Mar	14:59:05	17:43:34

measuring aerosol concentrations and composition, radiation quantities, gas-phase chemistry, and cloud microphysical properties. The G-1 aircraft performed mostly short-haul flights from Manaus, with most of the observations being held closer than 100 km from Manaus. The flight patterns

were mainly focused on measuring properties in and around the city pollution plume. A schematic for the concepts of the flight planning is shown in Fig. 1. The actual patterns varied daily depending on the weather forecast and plume dispersion prediction (Fig. 2). Additionally, other patterns were performed, such as a run upwind from Manaus in order to probe a background air reference or cloud profiling missions (vertical slices of the cloud field). However, the kind of pattern shown in Fig. 1 was the most used and is the determinant to assess the interaction between the urban plume with the background atmosphere.

During the wet season it is very common to observe cumulus clouds as exemplified in Fig. 1 and the G-1 cloud measurements consisted mostly of quick penetrations in those types of systems. From Manaus airport, the aircraft performed several legs perpendicular (or as close to as possible) to the plume direction while moving away from the city. At the end of the pattern, the aircraft started over in a different altitude and performed the same flight legs. In this way, it was possible to collect not only data regarding the plume but also on the surrounding background air. During the local wet season, the background atmosphere is rather clean and the effects of the plume can be readily observed. The polluting aerosols in this situation are almost only urban and biomass-burning contribution is very exceptional. The main idea to compare the background and polluted clouds is to

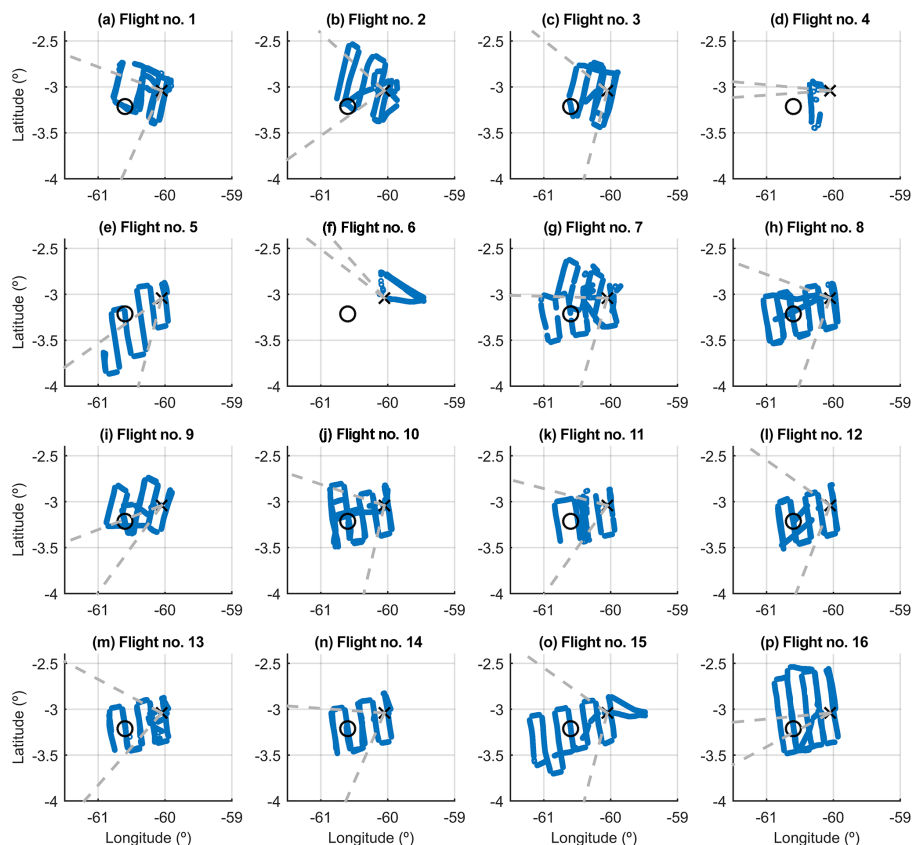


Figure 2. Trajectories for all G-1 flights during GoAmazon2014/5 IOP1. Manaus is located close to the $\{-60, -3\}$ point, marked with an “X”, while the T3 site is marked with the black circle.

accumulate statistics inside and outside the plume sections as shown in Fig. 1. By concatenating the observations for the different flights, it was possible to obtain a data set of background and polluted droplet size distributions (DSDs), which can then be used to look at aerosol impacts in different ways. All G-1 flights were used in order to obtain the highest sample size possible. Figure 2 shows the trajectories for all flights, where the dashed grey lines represent the plume angular section considered from the aeroplane data. Note that the plume usually disperses from Manaus to the T3 site, with relatively small variations in the direction based on the wind field. Two flights (4 and 6) had low sampling on the plume, given that the trajectories and the grey lines may not represent the overall region of the plume. However, the identified directions presented higher CN concentrations than the other ones.

2.1 Instrumentation

The two main instruments used for this study were the Condensational Particle Counter (CPC, TSI model 3025) and the Fast Cloud Droplet Probe (SPEC Inc., FCDP). The CPC instrument measures number concentration of aerosols between 3 nm and 3 μm using an optical detector after a super-

saturated vapour condenses onto the particles, growing them into larger droplets. Particle concentrations can be detected between 0 and 10^5 cm^{-3} with an accuracy of $\pm 10\%$. Coincidence is less than 2% at 10^4 cm^{-3} concentration and corrections are automatically applied for concentrations between 10^4 and 10^5 cm^{-3} . The CPC was mounted in a rack inside the cabin and connected to an isokinetic inlet and an aerosol flow diluter and was operated using an external pump. The isokinetic inlet has an upper limit of 5 μm for particle diameter, with penetration efficiency higher than 96%. A 1.5 L min^{-1} flow rate was maintained using a critical orifice. The dilution factor varied between one and five.

The FCDP measures particle size and concentration by using focused laser light that scatters off particles into collection lens optics and is split and redirected toward two detectors. The FCDP bins particles into 20 bins ranging between 1 and 50 μm , with an accuracy of approximately 3 μm in the diameters. Bin sizes were calibrated using glass beads at several sizes in the total range. The FCDP was mounted on the right wing of the G-1 aircraft. Shattering effects were filtered from the FCDP-measured DSDs (droplet size distributions), which is a built-in feature of the provider software. Additionally, measurements with low number concentration

(< 0.3 cm⁻³) and low water contents (< 0.02 g m⁻¹) were excluded.

The quality flag of the CPC instrument was used to correct the concentration measurements. Whenever an observation was flagged as “bad”, it was substituted by an interpolation between the closest measurements before and after it that were either “questionable” or “good”. For “good” measurements, which represent 59 % of all the measurements, the uncertainty is less than 10 %. The interpolation weights decayed exponentially with the time difference between the current observation and the reference ones. If the reference observations were more than 10 s apart, these data were excluded. Sixteen percent of the data were interpolated in that manner, while only 0.02 % had to be excluded. This process was required not only to smooth out the bad measurements but was also important for maintaining significant sample sizes (instead of simply excluding “bad” measurements). No averaging was applied to the 1 Hz CPC data. However, tests were made in order to check the impact that the sample frequency had on the results. The results were not sensible to moving averages of up to 10 s, which corresponds to roughly 1 km displacement given that the G-1 flew around 100 m s⁻¹ in speed. Given this observation, the analyses are based on the 1 Hz CPC measurements.

Complementary measurements of meteorological conditions were obtained from the Aventech Research Inc. AIMMS-20 instrument (Aircraft-Integrated Meteorological Measurement System, Beswick et al., 2008). This instrument combines temperature, humidity, pressure, and aircraft-relative flow sensors in order to provide the atmospheric conditions during the measurements. From the aircraft measurements of relative flow, the vertical wind speed was obtained and was used herein to compare cloud properties in the up- and downdraught regions. The precision of vertical wind speeds is 0.75 at 75 m s⁻¹ true airspeed.

2.2 Plume classification

In order to compare two different populations of clouds, namely those formed under background conditions compared to those affected by pollution, a classification scheme was developed. The most discernible and readily observable difference between a polluted and background atmosphere is the number concentration of aerosol particles per unit volume. Urban activities such as traffic emit large quantities of particles to the atmosphere, which are then transported by atmospheric motions and can participate in cloud formation, especially when they grow, age, and become more effective droplet activators. Their number concentration and sizes primarily determine their role on the initial condensational growth of cloud droplets through the aerosol activation mechanism. Even though the urban aerosols have a lower efficiency when becoming CCN (cloud condensation nuclei), their number concentrations are high enough to potentially produce a higher number of cloud droplets (see, for example,

Kuhn et al., 2010). By affecting the initial formation of the droplets, increased aerosol concentrations due to urban activities can alter the cloud microphysical properties throughout its whole life cycle. It will be considered here that a simple, yet effective, classification scheme should consider primarily aerosol number concentration to discriminate polluted and background conditions with respect to cloud formation environments. The intent of the classification scheme is not to quantify specifically the aerosols concentrations available for cloud formation under background and polluted conditions. Rather, it is a way to identify atmospheric sections that presented urban or natural aerosol characteristics.

Aerosol particle number concentrations (CN) measured by the CPC-3025 instrument were used to identify the plume location. The first procedure required is the elimination of possible artefacts related to measurements while the aircraft was inside a cloud. For that purpose, a cloud mask must be considered. The data are considered to be in-cloud by examining particle concentrations detected by several aircraft probes. The aircraft probes used to determine the presence of cloud are the Passive Cavity Aerosol Spectrometer (PCASP, SPEC Inc.), the 2D-Stero Probe (2D-S), and the Cloud Droplet Probe (CDP, Droplet Measurement Technologies). The thresholds for detection of cloud are when either the PCASP bins larger than 2.8 μm have a total concentration larger than 80 cm⁻³, the 2D-S total concentration is larger than 0.05 cm⁻³, or the CDP total concentration is larger than 0.3 cm⁻³. Thresholds were determined by examining the sensitivity of each instrument. Assuming that the presence of clouds can affect the CN measurements, the concentrations inside clouds were related to those in clear air. Whenever an in-cloud observation is detected, the CN concentration is substituted by the closest cloud-free measurement (given that they are not more than 15 s apart, in which case the data are excluded from the analysis). In this way, possible cloud and rain effects on aerosols concentrations, such as rainout or washout, can be mitigated on the analysis.

A simple and fixed threshold to separate the background and polluted observations is not enough because the altitude of the measurements should also be taken into account. For that purpose, all CPC data were used to compute vertical profiles of particle number concentrations in 800 m altitude bins. This resolution was chosen in order to result in significant amounts of data in each vertical bin. A background volume is identified whenever the measured particle concentration is below the 25 % quartile profile. The polluted ones are considered to be the ones above the 90 % profile. Additionally, it is required that the measurement is located in the general direction of the urban pollution dispersion in order to be considered a plume volume. Similarly, the background measurements are limited to the section outside the plume location only. It is important to note that, while the CPC data are available for the whole duration of the flights, in-cloud observations are limited to the times of actual penetrations. The choice of asymmetric 25 and 90 % profiles result in simi-

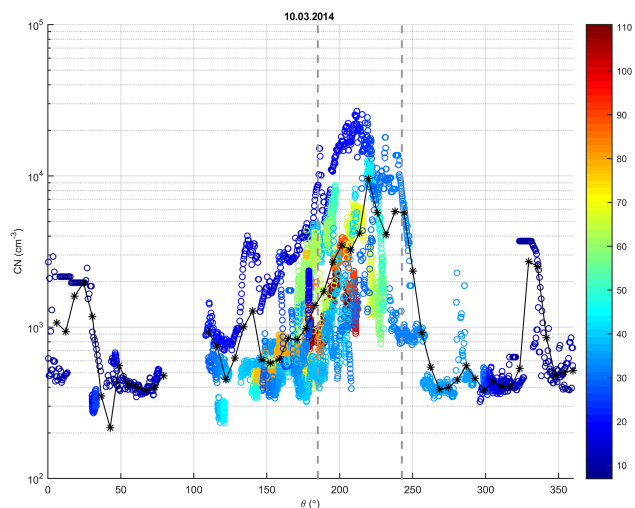


Figure 3. CN concentrations around Manaus for 10 March 2014. θ is the azimuth angle, is zero for east, and grows anticlockwise. Colours are proportional to the horizontal distance (km) between Manaus airport and the aircraft. The black dots represent the angular mean CN concentration for each of the 60 bins (azimuth). The vertical dashed lines represent the limits of the plume location.

lar sample sizes for the classified polluted and background in-clouds measurements (305 and 424 s, respectively), while maximizing the differences between the populations.

Given the daily variations of meteorological characteristics, the plume direction, width, and overall particle concentrations may vary. For that reason, the plume angular section must be obtained for each day individually. Figure 3 shows an example of plume classification for the flight on 10 March 2014. The CN concentrations are shown as a function of the azimuth angle with respect to Manaus airport (0° is east, grows anticlockwise), irrespective of altitude. The colour represents the horizontal distance (km) from the airport. Note that there is an angular section where the concentrations are high not only close to the city but also as far as 70 km. This section is defined to be affected by Manaus pollution plume (delimited by grey dashed lines in Fig. 3). Note that the coordinate system is centred on Manaus' airport, where the G-1 took off, and not on the centre of the city or other point of interest. For this reason, it is also possible to observe relatively high CN concentrations close to the origin and to the north-east and south-east directions. This corresponds to high CN concentrations over the city. By keeping those directions outside the plume angular section, these data are not considered as plume. This is intentional because other aspects occur over the city that may contribute to the cloud formation. For instance, the heat island effect may contribute to the convection, changing the thermodynamic conditions compared to those over the forest. By keeping the origin point as the airport, which is located on the west section of the city, this problem is avoided.

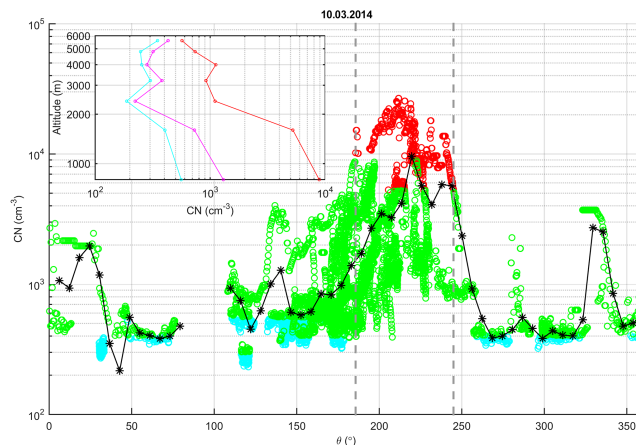


Figure 4. The same as Fig. 3, with the colouring representing the plume classification for 10 March 2014. The green-coloured dots represent unclassified points, red is for plume, and cyan is for background conditions. The inset shows the median (cyan) and the 25 % (blue) and 90 % (red) percentiles profiles of CN concentrations.

The final result of the classification scheme for 10 March is shown in Fig. 4. A visual inspection of radiosonde (released from the Ponta Pelada Airport located in southern Manaus) trajectory plots confirmed the overall direction of the plume for each flight. Given the nature of the meteorology in the Amazonian wet season, i.e. its similarities with oceanic conditions concerning horizontal homogeneity, there should be no significant difference between the thermodynamic conditions inside and outside the plume region for the G-1 flights. In this way, differences observed in pollution-affected clouds are primarily due to the urban aerosol effects. It should be noted that even though the plume classification is defined from the CN measurements, there are also observable differences regarding CCN concentrations. The in-plume CCN concentrations (for altitudes lower than 1000 m) averages at 257 cm^{-3} for a 0.23 % supersaturation, while the respective background concentration is 107 cm^{-3} (Fig. 5). Note the overall low concentrations representative of the wet season. In that case, the plume increases the CCN concentrations by more than a factor of 2. For higher supersaturation conditions (which can be achieved in strong updrafts), the differences are even more pronounced. At 0.5 % supersaturation, the average CCN concentration inside the plume is 564 cm^{-3} , while outside it is 148 cm^{-3} . This shows that the plume increases the concentration of aerosol particles that are able to form cloud droplets under reasonable supersaturation conditions, even though they are less efficient than the particles in the background air.

In addition to the plume, the river breeze also plays a role in the convection characteristics over the region and the respective microphysics. The clouds directly above the rivers are usually suppressed by the subsidence from the breeze circulation. This was addressed by comparing the DSDs un-

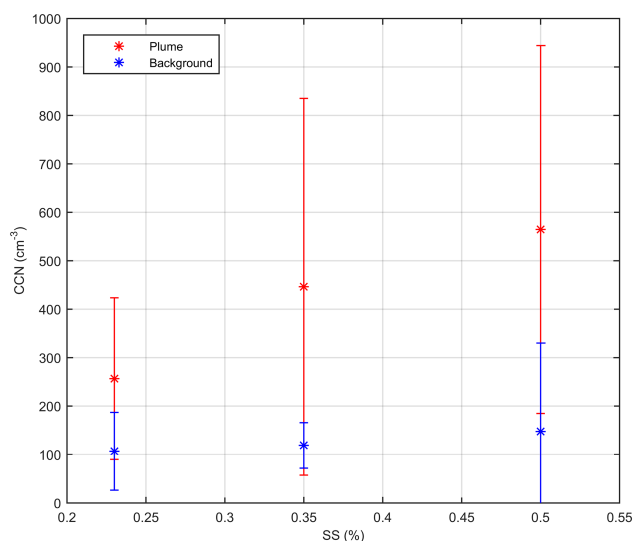


Figure 5. CCN concentrations as function of supersaturation. Measurements inside the plume are shown in red, while background conditions are represented in blue.

der plume and background conditions only for measurements over land, and it showed a similar picture to what will be shown in the next section. In this way it is possible to confirm that the results presented here reflect the effect of the Manaus pollution plume and not the river breeze, even though the clouds over land were indeed more vigorous. The results shown in the next section consist of the data probed both above rivers and above land.

3 Results

3.1 Bulk DSD properties for polluted and background clouds

Given that the aerosol population directly affects cloud formation during the CCN activation process, bulk DSD properties under polluted and background conditions may differ. Figure 6 shows the frequency distribution of the droplet number concentrations (DNC), liquid water content (LWC), and effective diameter (D_e) for all measurements inside the plume and under background conditions, irrespective of altitude. Those bulk properties were obtained from the FCDP-measured DSDs. The background clouds presented droplet number concentrations below 200 cm^{-3} for most cases, while being more dispersed for the polluted DSDs. It shows that higher DNC is much more likely to be found under polluted conditions than on background air. This observation may be tentatively justified as an increase in the water vapour competition, which leads to the formation of a higher number of droplets with smaller diameters. However, the water vapour competition is usually discussed for a fixed LWC, which is not the case for the statistics shown here. The

measured background clouds presented lower water contents overall, which could also partly justify the lower concentrations observed.

The effective diameter histograms show distinct droplet sizes distributions for both populations. While around 50 % of droplets in the polluted clouds have D_e between 8 and $12\ \mu\text{m}$, the frequency distribution for the background clouds shows more frequent occurrence of $D_e > 12\ \mu\text{m}$, even though they peak at similar diameters. This factor shows that, despite condensing lower amounts of total liquid water, the background clouds are able to produce bigger droplets than their polluted counterparts. Overall, Fig. 6 shows a picture consistent with the water vapour competition concept. However, DSD formation under a water vapour competition scenario depends on two factors. One is commonly cited in the literature (e.g. Albrecht, 1989) and is related to the impacts on effective droplet size as a function of aerosol number concentration. The other factor is how much bulk water the systems are able to condense while the vapour competition is ongoing. Figure 6 suggests that the Manaus pollution plume affects both mechanisms, which are more complex than the water vapour competition process.

An interesting question to address is why LWC is lower for background clouds, i.e. why this type of cloud is relatively inefficient for converting water vapour to liquid droplets. One possible answer is related to total particle surface area in a given volume. Considering a constant aerosol size distribution, when their total number concentration is increased, the total particle surface area per unit volume also increases. In this way there is a wider area for the condensation to occur, leading to higher liquid water contents. Additionally, if there is higher competition for the water vapour, the more numerous and smaller droplets formed under polluted conditions will grow faster by condensation than their background counterparts (because the condensation rate is inversely proportional to droplet size) and will readily reach the threshold for detection by the FCDP (around $1\ \mu\text{m}$). One point to remember is the high amount of water vapour available during the wet season. Those differences in the bulk condensational growth under polluted or background conditions may explain in part the differences observed in Fig. 6c–d, even if the aerosol size distribution changes from the background to the polluted sections. If the bulk condensation is more effective in a polluted environment, it should also lead to increased latent heat release and stronger updraughts. In a stronger updraught the supersaturations tend to be higher, which feeds back into an even higher condensation rate.

Other possible physical explanations for the higher LWC in polluted clouds include processes associated with precipitation-sized droplets (i.e. outside the FCDP size range) and aerosol characteristics. If the aerosol-rich plume is able to reduce the effective sizes of the liquid droplets, it will also be able to delay the drizzle formation. In this way, the liquid water would remain inside the cloud instead of precipitating. On the other hand, the fast-growing droplets

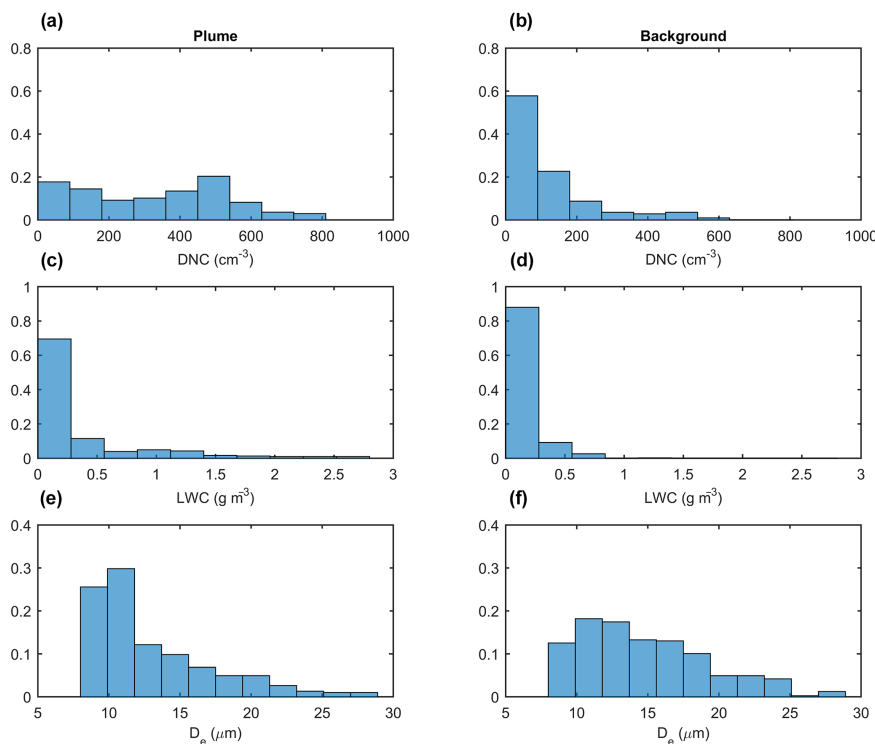


Figure 6. Normalized histograms of cloud droplet properties affected and unaffected by the Manaus plume. (a–b) Total droplet number concentration (cm⁻³), (c–d) liquid water content (g m⁻³), and (e–f) effective diameter (μm).

in the background clouds may grow past the FCDP upper threshold, effectively removing water from the instrument size range. However, the penetrated clouds were predominantly non-precipitating cumulus at the early stages of their life cycles. Therefore, the warm-phase was not completely developed and the condensational growth plays a major role in determining the overall DSD properties. The second process identified (i.e. suppressed precipitation staying longer inside the clouds) probably has a lower impact. The average ratio between the second moment of the polluted and background DSDs is around two, which shows that the former has around twice the total area for condensation than their background counterparts. In this way, the increase in the bulk condensation efficiency is probably significant. Further studies are encouraged in order to detail and quantify the processes that lead to the observed LWC amount. However, based on Koren et al. (2014), the most determinant factor contributing for the high amount of cloud water under polluted conditions seems to be related to the condensation process. In the referred paper, it is shown that the amount of total condensed water tends to grow with aerosol concentration in a pristine atmosphere.

In order to detail the pollution effects on the total condensation rate and on the DSD properties, averaged properties for different water content and updraught speeds are analysed. Firstly, given that the LWC is a measure of the total amount of water condensed onto the aerosol population, its

correlation with the updraughts should be assessed. The updraught speed at cloud base can be understood as a proxy for the thermodynamic conditions, as it is a result of the meteorological properties profiles in lower levels. In this way, it is possible to disentangle the aerosol and thermodynamic effects by averaging the LWC data at different updraught speed levels. Figure 7a shows the result of this calculation for only the lower 1000 m of the clouds, while also differentiating between polluted and background clouds. The 1000 m limit is chosen both for maximizing statistics and capturing the layer in which the aerosol activation takes place. That layer is possibly thicker under polluted conditions, given the higher availability of nuclei. For similar updraught conditions, i.e. similar thermodynamics, the averaged total liquid water is always higher for polluted clouds. By eliminating the dependence on the thermodynamic conditions, it is possible to conclude that the LWC values are significantly influenced by the aerosol population. This figure shows that, on average, not only are the polluted clouds more efficient at the bulk water condensation but the resulting LWC scales with updraught speed (linear coefficients, considering the error bars, are 0.13 g s m⁻² for plume measurements and 0.033 g s m⁻² for background clouds). In a background atmosphere, most of the aerosols have been activated, and increasing updraught strength does not result in further condensation. On the other hand, the higher availability of aerosols inside the plume allows for more condensational growth as long as enough

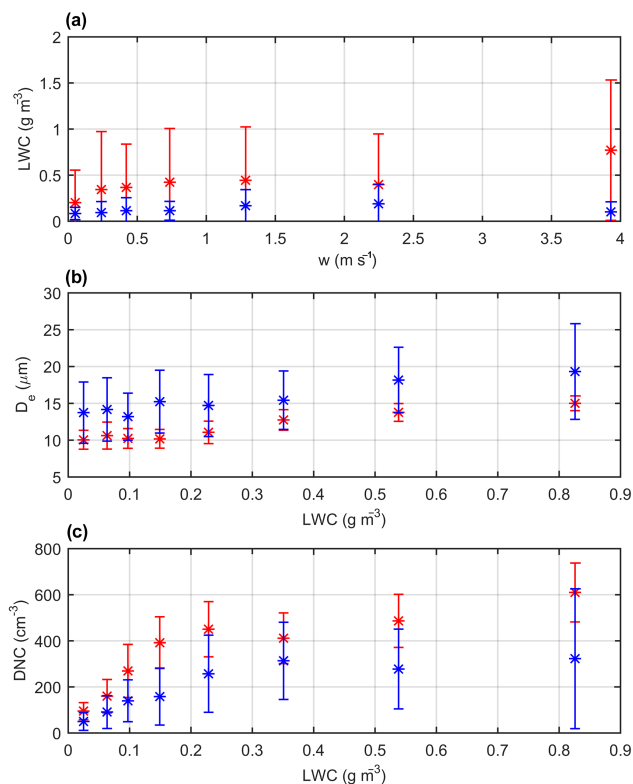


Figure 7. (a) Mean LWC values for different log-spaced w intervals and (b) mean D_e and (c) DNC for log-spaced LWC intervals. Error bars are the standard deviation for each interval. Blue points indicate background measurements, while red ones are relative to the polluted ones. The points are located at the middle of the respective bin intervals. Those results are limited to the first 1000 m of the clouds.

supersaturation is generated, especially considering that the critical dry diameter for activation is inversely proportional to supersaturation and, consequently, to the updraught speed. However, a deeper analysis in a bigger data set would be required to assess the statistical significance. The enhanced condensation efficiency and the possible LWC scaling with updraught strength at least partly explain the higher liquid water contents in the plume-affected clouds. The standard deviation bars in Fig. 7a indicate that while there is high variability for the LWC in polluted clouds, the clean ones are rather consistent regarding the condensation efficiency.

The water vapour competition effect can be observed by examining droplet effective diameter and number concentrations at a certain LWC interval, as shown in Fig. 7b and c. In this way, the polluted and background DSD properties can be evaluated irrespective of the bulk efficiency of the cloud to convert water vapour into liquid water. It is clear that, even with the dispersion observed, the two DSD populations present consistently different average behaviours for all LWC intervals. For similar LWC, the averaged effective diameter is always larger on background clouds, with lower droplet num-

ber concentrations on average. Those results show a picture clearly consistent with enhanced water vapour competition in polluted clouds. It shows that, given a bulk water content value, droplet growth is more efficient in background clouds. This process should make background clouds more efficient at producing rain from the warm-phase mechanisms because of the early initiation of the collision–coalescence growth.

Another noteworthy point shown in Fig. 7 is the difference between the relationships of D_e and LWC, and of DNC and LWC. While the average effective diameter varies linearly with LWC ($R^2 = 0.95$ for plume and $R^2 = 0.92$ for background DSDs), there seems to be a capping on DNC. This means that for low LWC ($< 0.4 \text{ g m}^{-3}$), increases in the total water content are reflected in increased droplet concentrations. For higher LWC values, the averaged DNC remains relatively constant, while the effective diameter grows with the water content. This suggests that at low water content levels, i.e. at the early stages of cloud formation, the formation of new droplets has a relatively higher impact on the overall LWC. As the cloud develops, the LWC is tied to the effective diameter of the droplets, as the impact of new droplet formation is weaker at this point. This effect is clearer in background clouds given the limited aerosol availability.

3.2 Vertical DSD development and the role of the vertical wind speed

The analysis of bulk DSD properties indicates a clear difference between the polluted and background cloud microphysics. However, it is desirable now to further detail those differences. As most of the aerosol activation takes place close to cloud base (Hoffmann et al., 2015), the direct effects of enhancements in particle concentrations should be limited to this region. However, the aerosol effect can carry over to later stages of the cloud life cycle given that it will develop under perturbed initial conditions. One proxy for the cloud DSD evolution in time is to analyse its vertical distribution. For a statistical comparison, a relative altitude for all flights is defined. This relative altitude is calculated as follows: firstly, the closest radiosonde is used in order to obtain the cloud base altitude (as the lifting condensation level) and the freezing level. In case the aeroplane reached high enough altitudes, its data are instead used to obtain the altitude of the 0°C isotherm. From those two levels, the relative altitude is calculated as percentages where 0% represents the cloud base and 100% is the freezing level. The altitudes of the cloud base and freezing levels range, respectively, from 100 to 1200 m and from 4670 to 5300 m approximately. Three layers are then defined: (1) bottom layer in which relative altitudes vary between 0 and 20%; (2) middle layer for 20 to 50%; and (3) top layer, where the altitude is above 50%. Those specific relative altitude intervals were chosen in order to capture the physics of the cloud vertical structure and to minimize the differences in sample sizes for each layer, as there are more measurements for lower levels.

Table 2. Averaged bulk DSD properties for the three warm-phase layers and the respective standard deviations. The bottom layer is defined by relative altitudes between 0 and 20 %, the middle layer between 20 and 50 %, and the top between 50 and 100 %.

Layer	DNC (cm^{-3})		D_e (μm)		LWC (g m^{-3})	
	Plume	Background	Plume	Background	Plume	Background
Bottom	317 ± 190	127 ± 131	11.3 ± 2.00	14.2 ± 4.19	0.206 ± 0.216	0.114 ± 0.122
Mid	360 ± 276	81.6 ± 77.4	17.7 ± 4.12	18.4 ± 6.18	0.848 ± 0.788	0.183 ± 0.218
Top	191 ± 203	7.64 ± 14.9	15.5 ± 5.28	31.7 ± 4.12	0.522 ± 0.703	0.0766 ± 0.151

Despite probing individual clouds, the DSD measurements can be combined into the three layers defined and interpreted as representative of a single system. It is conceptually similar to satellite retrievals of vertical profiles of effective droplet radii (e.g. Rosenfeld and Lensky, 1998), where the cloud top radius is measured for different clouds with distinct depths and combined into one profile. This approach was validated by in situ measurements for the Amazon region by Freud et al. (2008).

Figure 8 shows statistical results for the DSDs in the three defined warm layers, while Table 2 shows the respective mean bulk properties. The altitude-averaged values show that the polluted clouds present higher number concentrations and water contents but lower diameters for all layers. Additionally, DNC decays much more slowly with altitude, and droplet growth is significantly suppressed. Those observations point to enhanced collisional growth in the background clouds.

The overall picture of cloud DSD vertical evolution can be seen in Fig. 8a. The most discerning feature between the DSDs at different altitudes is related to the concentrations of droplets greater than $25 \mu\text{m}$. The concentrations in this size range grow with altitude on average. On the other hand, the concentrations of droplets smaller than $15 \mu\text{m}$ tend to diminish from the bottom to the top layer. Considering that the vertical dispersion of the DSDs represents at least in part its temporal evolution, this feature is associated with droplet growth, where the bigger droplets grow in detriment of the smaller ones. This growth mechanism is the collision-coalescence process, where the bigger droplets collect the smaller ones and acquire their mass. The shaded areas on the figure show that this is not only an average feature, but is also visible in the quantiles.

The statistical results of the vertical evolution of the DSDs are discriminated for the measurements inside the plume and in background regions in Fig. 8b–c. At first glance, it is quite clear that the two DSD populations present different behaviours with altitude, meaning that the droplets grow differently depending on the aerosol loading. The plume DSDs present a high concentration on the bottom layer and shows weak growth with altitude. The concentration of small droplets ($< 15 \mu\text{m}$) does not change much with altitude and the top layer DSD is relatively similar to the middle one. On the other hand, the DSDs in the background clouds show

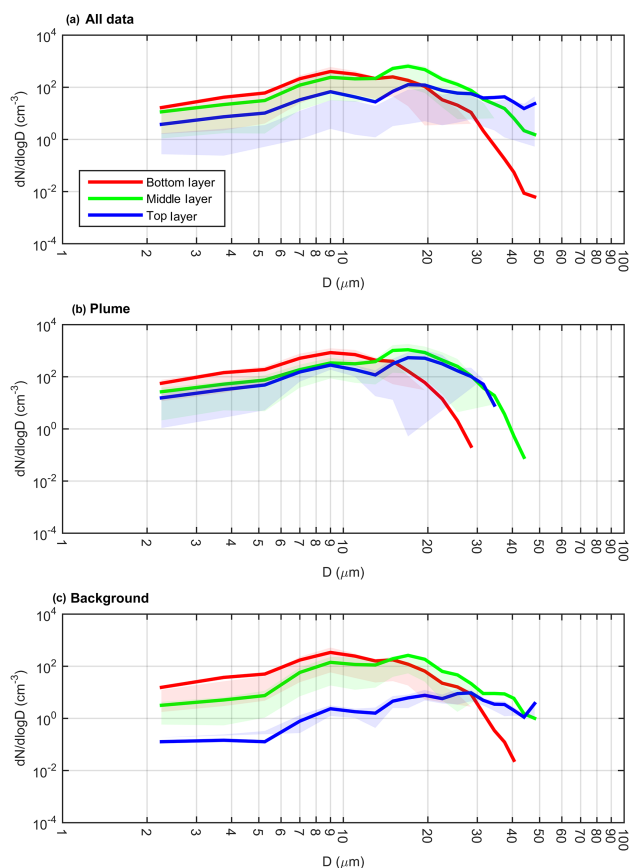


Figure 8. Averaged DSDs for three different cloud layers: bottom, middle, and top of the warm layer. Graph (a) shows the results for all DSDs irrespective of classification, while (b) is for polluted DSDs only, and (c) for background. Lines represent averages, while the shaded areas represent the dispersion between the 25 and 75 % quantiles.

a stronger growth with altitude (Fig. 8c). The bottom layer DSD presents lower concentrations of small droplets but higher concentrations of bigger droplets than its polluted counterpart does. This coexistence of relatively big and small droplets readily activates the collision-coalescence process, accelerating droplet growth. After comparing both polluted and background DSDs with the overall averages (Fig. 8a), it is clear that enhanced aerosol loading leads to less than

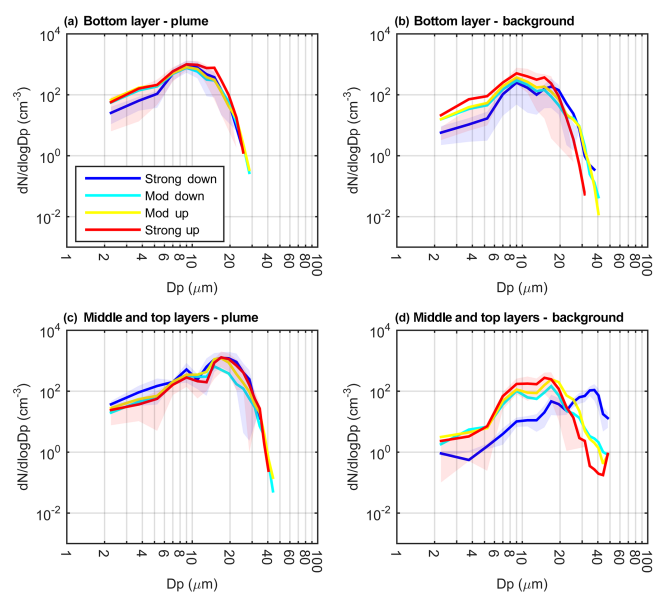


Figure 9. Averaged DSDs as function of altitude, presence of up- and downdraughts, and aerosol conditions. The first row shows results for the bottom layer under (a) polluted and (b) background conditions. The middle and top layer results are shown together in the second row for (c) plume and (d) background conditions. “Strong down” means the presence of strong downdraughts, with velocities lower than -2 m s^{-1} . “Mod down” is moderate downdraughts, with $-2 \text{ m s}^{-1} < w \leq 0$. “Mod up” and “Strong up” are the equivalents for updraughts. Their velocity ranges are, respectively, $0 < w \leq 2 \text{ m s}^{-1}$ and $w > 2 \text{ m s}^{-1}$. The shaded areas represent the dispersion between the 25 and 75 % for the strong downdraughts (in blue) and updraughts (in red).

average growth rates, and the opposite is true for background clouds. The average growth rate for D_e is 2.90 and $5.59 \mu\text{m km}^{-1}$ for polluted and background clouds, respectively.

The vertical speed inside the cloud is a critical factor as it helps determine the supersaturation and consequently the condensation rates in the updraughts. The interaction between the updraught speeds and aerosol loadings ultimately determines the initial DSD formations at cloud base. As mentioned before, the characteristics of the initial DSD may have impacts on the whole cloud life cycle, making the study of the vertical velocities critical for understanding the system development. Figure 9 shows averaged DSDs for different cloud layers and vertical velocities conditions, discriminating between the plume and background cases. The first row shows results for the bottom layer under (a) plume and (b) background conditions. The middle and top layer results are shown together in the second row, for (c) plume and (d) background conditions. “Strong” and “Mod” are references to the up- or downdraught speed (strong or moderate). The middle and top layers are considered in conjunction in order to increase the sample size.

For the bottom layer, the vertical velocity has an impact mainly on the concentration of small droplets on polluted DSDs in the range $D < 5 \mu\text{m}$. The regions that presented updraughts are associated with higher concentrations of such droplets because of new droplets nucleated under supersaturation. The downdraught regions mainly contain droplets that already suffered some processing in the cloud system and have relatively lower concentrations of small droplets that were probably collected by bigger ones. Additionally, small droplets ascend readily with the updraughts due to their low mass, which is also a factor that can contribute to the differences between up- and downdraught DSDs. However, the dispersion shown in the shaded areas shows that the populations of DSDs in up- and downdraughts are relatively similar, suggesting a homogeneous layer with respect to DSD types. The DSDs shown on Fig. 9a indicate single-mode distributions, which hamper collection processes and explain the similarities between the different vertical velocity regions. On the other hand, the background clouds have a second mode, especially in the downdraughts, given the additional cloud processing which favours the collision–coalescence process. The particles associated with background air in the Amazon are not only less numerous but also bigger overall compared to the urban pollution, and both of those features favour faster growth by condensation because of less vapour competition and larger initial sizes. It is interesting to note that the background DSDs in the strong updraught regions are narrower when compared to their polluted counterpart. In a polluted environment, there is not only the natural background aerosol population but also the urban particles emitted from Manaus. The mixture of the two, with the consequent physicochemical interactions, permits the formation of droplets over a wider size range, with a prolonged tail towards the lower diameters. The shaded areas show that the differences between the DSDs in the up- and downdraught regions are statistically relevant for the background clouds and are not a mere averaging feature.

Cloud droplets keep growing as they move to higher altitudes, but the way in which it occurs is rather different in a background or plume-affected environment. For polluted DSDs, there are two modes at the higher altitudes: one reminiscent of the lower levels and the other probably mainly a result of additional condensational growth. In those systems, the additional processing does not seem to be effective at producing bigger droplets, as shown by the blue line and shaded area in Fig. 9c. For the background clouds, DSDs in the updraught regions show similar modes to their polluted counterparts, one close to $10 \mu\text{m}$ and the other at around $18 \mu\text{m}$. However, there are appearances of droplets bigger than $30 \mu\text{m}$ that contribute to the formation of a third mode in the middle and top layers. This mode appears on the strong downdraught regions, which suggests it appears after in-cloud processing.

4 Summary and conclusions

This study focused on the analysis of microphysics of warm-phase clouds in the Amazon during the wet season, with a specific emphasis on interactions with the pollution emitted by Manaus city. A statistical approach was used to compare several clouds probed in different flights on different days. Concerning the effects of the pollution plume on the cloud DSDs bulk properties, there are two processes to consider. A polluted environment with high particle count presents a high total area for the condensation, favouring higher bulk liquid water on the DSDs. Additionally, the total amount of condensed water scales with updraught speed in the plume-affected clouds, which is not the case for background clouds. The growth processes under background aerosol levels are much more effective even with lower bulk liquid water contents. Despite the lower amount of water condensed in background DSDs, bigger droplets readily form due to the early start of the collision–coalescence process (which does not increase LWC). Polluted clouds had droplets 10–40 % smaller on average and more numerous droplets (as high as 1000 % difference) in the same vertical layers inside the cloud.

The averaged DSDs in different layers of warm clouds show droplets grow with altitude overall, with bigger droplets acquiring mass from the smaller ones. However, the growth rates with altitude are much slower for plume-affected clouds (almost half of the clean growth rate) due to the enhanced water vapour competition and the lack of bigger droplets at the onset of the systems. Background clouds present relatively high concentrations of droplets greater than $20\ \mu\text{m}$ near the cloud base that contributed to the growth rates, especially taking into account the non-linear nature of the collection process. With respect to warm-phase cloud DSDs, the updraught strength does not seem to be the major driving force for effective droplet growth, especially beyond the $20\ \mu\text{m}$ range. The most important features for producing such big droplets are weak water vapour competition (usually observed in background clouds) and the existence of bimodality at the lower levels of the cloud. The weak water vapour competition favours the formation of big droplets ($> 20\ \mu\text{m}$) required for the collision–coalescence process, while the bimodality favours the efficiency of the collision–coalescence process due to the large terminal velocity differences between the modes. However, the thermodynamic role of the updraught speeds should not be underestimated. It is responsible for transporting hydrometeors beyond the freezing level, activating the cold processes. Those processes are known to be associated with thunderstorms and intense precipitation. Nevertheless, the main feature that determines warm-phase DSD shapes seems to be the aerosol conditions, with the vertical velocities playing a role in the modulation of the distributions.

While the effects of aerosol particles in the warm layer of the clouds are relatively straightforward, this may not be the case for the mixed and frozen portions. An aspect that was

not directly addressed in this work is the impacts of warm layer characteristics on the formation of the mixed phase (above the $0\ ^\circ\text{C}$ isotherm). Given that aerosols alter the properties of the whole warm phase, it is reasonable to assume that this would have an impact on the initial formation of the mixed layer. Such impacts can be in the form of the timing and physical characteristics of the first ice particles and the maximum altitude with supercooled droplets above the freezing level. This issue will be addressed in future studies, taking advantage of data provided by the HALO (High Altitude and Long Range Aircraft) aeroplane that operated in the second GoAmazon2014/5 IOP between September and October 2014.

The Supplement related to this article is available online at doi:10.5194/acp-16-7029-2016-supplement.

Acknowledgements. This work was funded by FAPESP (project Grant 2014/08615-7 and 2009/15235-8), and the Atmospheric Radiation Measurement (ARM) Climate Research Facility, a US Department of Energy Office of Science user facility sponsored by the Office of Biological and Environmental Research. We acknowledge the support from the Central Office of the Large Scale Biosphere Atmosphere Experiment in Amazonia (LBA), the Instituto Nacional de Pesquisas da Amazonia (INPA), and the Instituto Nacional de Pesquisas Espaciais (INPE). The work was conducted under 001262/2012-2 of the Brazilian National Council for Scientific and Technological Development (CNPq). Jiwen Fan was supported by the US Department of Energy Office of Science Atmospheric System Research (ASR) Program. We thank Karla M. Longo for her leadership in the Brazilian side of the GoAmazon2014/5.

Edited by: M. Assuncao Silva Dias

References

- Albrecht, B. A.: Aerosols, cloud microphysics, and fractional cloudiness, *Science*, 245, 1227–1230, 1989.
- Andreae, M. O. and Rosenfeld, D.: Aerosol–cloud–precipitation interactions. Part 1. The nature and sources of cloud-active aerosols, *Earth-Sci. Rev.*, 89, 1–2, 13–41, 2008.
- Andreae, M. O., Rosenfeld, D., Artaxo, P., Costa, A. A., Frank, G. P., Longo, K. M., and Silva-Dias, M. A. F.: Smoking Rain Clouds over the Amazon, *Science*, 303, 1337–1342, 2004.
- Artaxo, P., Martins, J. V., Yamasoe, M. A., Procópio, A. S., Pauliquevis, T. M., Andreae, M. O., Guyon, P., Gatti, L. V., and Leal, A. M. C.: Physical and chemical properties of aerosols in the wet and dry seasons in Rondônia, Amazonia, *J. Geophys. Res.*, 107, 8081, doi:10.1029/2001JD000666, 2002.
- Beswick, K. M., Gallagher, M. W., Webb, A. R., Norton, E. G., and Perry, F.: Application of the Aventech AIMMS20AQ airborne probe for turbulence measurements during the Convective Storm Initiation Project, *Atmos. Chem. Phys.*, 8, 5449–5463, doi:10.5194/acp-8-5449-2008, 2008.

- Biesenthal, T. A., Wu, Q., Shepson, P. B., Wiebe, H. A., Anlauf, K. G., and Mackay, G. I.: A study of relationships between isoprene, its oxidation products, and ozone, in the Lower Fraser Valley, BC, *Atmos. Environ.*, 31, 2049–2058, 1997.
- Chameides, W. L., Fehsenfeld, F., Rodgers, M. O., Cardelino, C., Martinez, J., Parrish, D., Lonneman, W., Lawson, D. R., Rasmussen, R. A., Zimmerman, P., Greenberg, J., Middleton, P., and Wang, T.: Ozone precursor relationships in the ambient atmosphere, *J. Geophys. Res.-Atmos.*, 97, 6037–6055, 1992.
- Freud, E., Rosenfeld, D., Andreae, M. O., Costa, A. A., and Artaxo, P.: Robust relations between CCN and the vertical evolution of cloud drop size distribution in deep convective clouds, *Atmos. Chem. Phys.*, 8, 1661–1675, doi:10.5194/acp-8-1661-2008, 2008.
- Hoffmann, F., Raasch, S., and Noh, Y.: Entrainment of aerosols and their activation in a shallow cumulus cloud studied with a coupled LCM–LES approach, *Atmos. Res.*, 156, 43–57, doi:10.1016/j.atmosres.2014.12.008, 2015.
- Kanakidou, M., Tsigaridis, K., Dentener, F. J., and Crutzen, P. J.: Human-activity-enhanced formation of organic aerosols by biogenic hydrocarbon oxidation, *J. Geophys. Res.-Atmos.*, 105, 9243–9254, 2000.
- Koren, I., Dagan, G., and Altaratz, O.: From aerosol-limited to invigoration of warm convective clouds, *Science*, 344 1143–1146, 2014.
- Kuhn, U., Ganzeveld, L., Thielmann, A., Dindorf, T., Schebeske, G., Welling, M., Sciare, J., Roberts, G., Meixner, F. X., Kesselmeier, J., Lelieveld, J., Kolle, O., Ciccioli, P., Lloyd, J., Trentmann, J., Artaxo, P., and Andreae, M. O.: Impact of Manaus City on the Amazon Green Ocean atmosphere: ozone production, precursor sensitivity and aerosol load, *Atmos. Chem. Phys.*, 10, 9251–9282, doi:10.5194/acp-10-9251-2010, 2010.
- Lelieveld, J., Butler, T. M., Crowley, J. N., Dillon, T. J., Fischer, H., Ganzeveld, L., Harder, H., Lawrence, M. G., Martinez, M., Taraborrelli, D., and Williams, J.: Atmospheric oxidation capacity sustained by a tropical forest, *Nature*, 452, 737–740, 2008.
- Logan, J. A., Prather, M. J., Wofsy, S. C., and McElroy, M. B.: Tropospheric chemistry: a global perspective, *J. Geophys. Res.*, 86, 7210–7254, 1981.
- Machado, L. A. T., Fisch, G., Tota, J., Dias, M. A. F., Silva, Lyra, F., and Nobre, C.: Seasonal and diurnal variability of convection over the Amazonia: A comparison of different vegetation types and large scale forcing, *Theor. Appl. Climatol.*, 78, 61–77, doi:10.1007/s00704-004-0044-9, 2004.
- Martin, S. T., Andreae, M. O., Artaxo, P., Baumgardner, D., Chen, Q., Goldstein, A. H., Guenther, A., Heald, C. L., Mayol-Bracero, O. L., McMurry, P. H., Pauliquevis, T., Pöschl, U., Prather, K. A., Roberts, G. C., Saleska, S. R., Silva Dias, M. A., Spracklen, D. V., Swietlicki, E., and Trebs, I.: Sources and properties of Amazonian aerosol particles, *Rev. Geophys.*, 48, RG2002, doi:10.1029/2008RG000280, 2010.
- Martin, S. T., Artaxo, P., Machado, L. A. T., Manzi, A. O., Souza, R. A. F., Schumacher, C., Wang, J., Andreae, M. O., Barbosa, H. M. J., Fan, J., Fisch, G., Goldstein, A. H., Guenther, A., Jimenez, J. L., Pöschl, U., Silva Dias, M. A., Smith, J. N., and Wendisch, M.: Introduction: Observations and Modeling of the Green Ocean Amazon (GoAmazon2014/5), *Atmos. Chem. Phys.*, 16, 4785–4797, doi:10.5194/acp-16-4785-2016, 2016.
- Martins, J. A. and Silva Dias, M. A. F.: The impact of smoke from forest fires on the spectral dispersion of cloud droplet size distributions in the Amazonian region, *Environ. Res. Lett.*, 4, 015002, doi:10.1088/1748-9326/4/1/015002, 2009.
- Pöschl, U., Martin, S. T., Sinha, B., Chen, Q., Gunthe, S. S., Huffman, J. A., Borrmann, S., Farmer, D. K., Garland, R. M., Helas, G., Jimenez, J. L., King, S. M., Manzi, A., Mikhailov, E., Pauliquevis, T., Petters, M. D., Prenni, A. J., Roldin, P., Rose, D., Schneider, J., Su, H., Zorn, S. R., Artaxo, P., and Andreae, M. O.: Rainforest Aerosols as Biogenic Nuclei of Clouds and Precipitation in the Amazon, *Science*, 329, 1513–1516, 2010.
- Roberts, G. C., Nenes, A., Seinfeld, J. H., and Andreae, M. O.: Impact of biomass burning on cloud properties in the Amazon Basin, *J. Geophys. Res.-Atmos.*, 108, 4062, doi:10.1029/2001JD000985, 2003.
- Roberts, J. M., Williams, J., Baumann, K., Buhr, M. P., Goldan, P. D., Holloway, J., Hubler, G., Kuster, W. C., McKeen, S. A., Ryrerson, T. B., Trainer, M., Williams, E. J., Fehsenfeld, F. C., Bertman, S. B., Nouaime, G., Seaver, C., Grodzinsky, G., Rodgers, M., and Young, V. L.: Measurements of PAN, PPN, and MPAN made during the 1994 and 1995 Nashville Intensives of the Southern Oxidant Study: Implications for regional ozone production from biogenic hydrocarbons, *J. Geophys. Res.-Atmos.*, 103, 22473–22490, 1998.
- Rosenfeld, D. and Lensky, I. M.: Satellite-based insights into precipitation formation processes in continental and maritime convective clouds, *B. Am. Meteorol. Soc.*, 79, 2457–2476, 1998.
- Rosenfeld, D., Lohmann, U., Raga, G. B., O'Dowd, C. D., Kulmala, M., Fuzzi, S., Reissell, A., and Andreae, M. O.: Flood or drought: How do aerosols affect precipitation?, *Science*, 321, 1309–1313, 2008.
- Schmid, B., Tomlinson, J. M., Hubbe, J. M., Comstock, J. M., Mei, F., Chand, D., Pekour, M. S., Kluzek, C. D., Andrews, E., Biraud, S. C., and McFarquhar, G. M.: The DOE ARM Aerial Facility, *B. Am. Meteorol. Soc.*, 95, 723–742, doi:10.1175/BAMS-D-13-00040.1, 2014.
- Starn, T. K., Shepson, P. B., Bertman, S. B., White, J. S., Splawn, B. G., Riemer, D. D., Zika, R. G., and Olszyna, K.: Observations of isoprene chemistry and its role in ozone production at a semirural site during the 1995 Southern Oxidants Study, *J. Geophys. Res.-Atmos.*, 103, 22425–22435, 1998.
- Thompson, A. M.: The oxidizing capacity of the Earth's atmosphere: Probable past and future changes, *Science*, 256, 1157–1165, 1992.
- Trainer, M., Williams, E. J., Parrish, D. D., Buhr, M. P., Allwine, E. J., Westberg, H. H., Fehsenfeld, F. C., and Liu, S. C.: Models and observations of the impact of natural hydrocarbons on rural ozone, *Nature*, 329, 705–707, 1987.
- Vera, C., Higgins, W., Amador, J., Ambrizzi, T., Garreaud, R., Gochis, D., Gutzler, D., Lettenmaier, D., Marengo, J., Mechoso, C. R., Noguez-Paele, J., Silva Diaz, P. L., and Zhang, C.: Towards a unified view of the American Monsoon System, *J. Climate*, 19, 4977–5000, 2006.
- Wiedinmyer, C., Friedfeld, S., Baugh, W., Greenberg, J., Guenther, A., Fraser, M., and Allen, D.: Measurement and analysis of atmospheric concentrations of isoprene and its reaction products in central Texas, *Atmos. Environ.*, 35, 1001–1013, 2001.
- Zhou, J. and Lau, K. M.: Does a Monsoon Climate Exist over South America?, *J. Climate*, 11, 1020–1040, 1998.